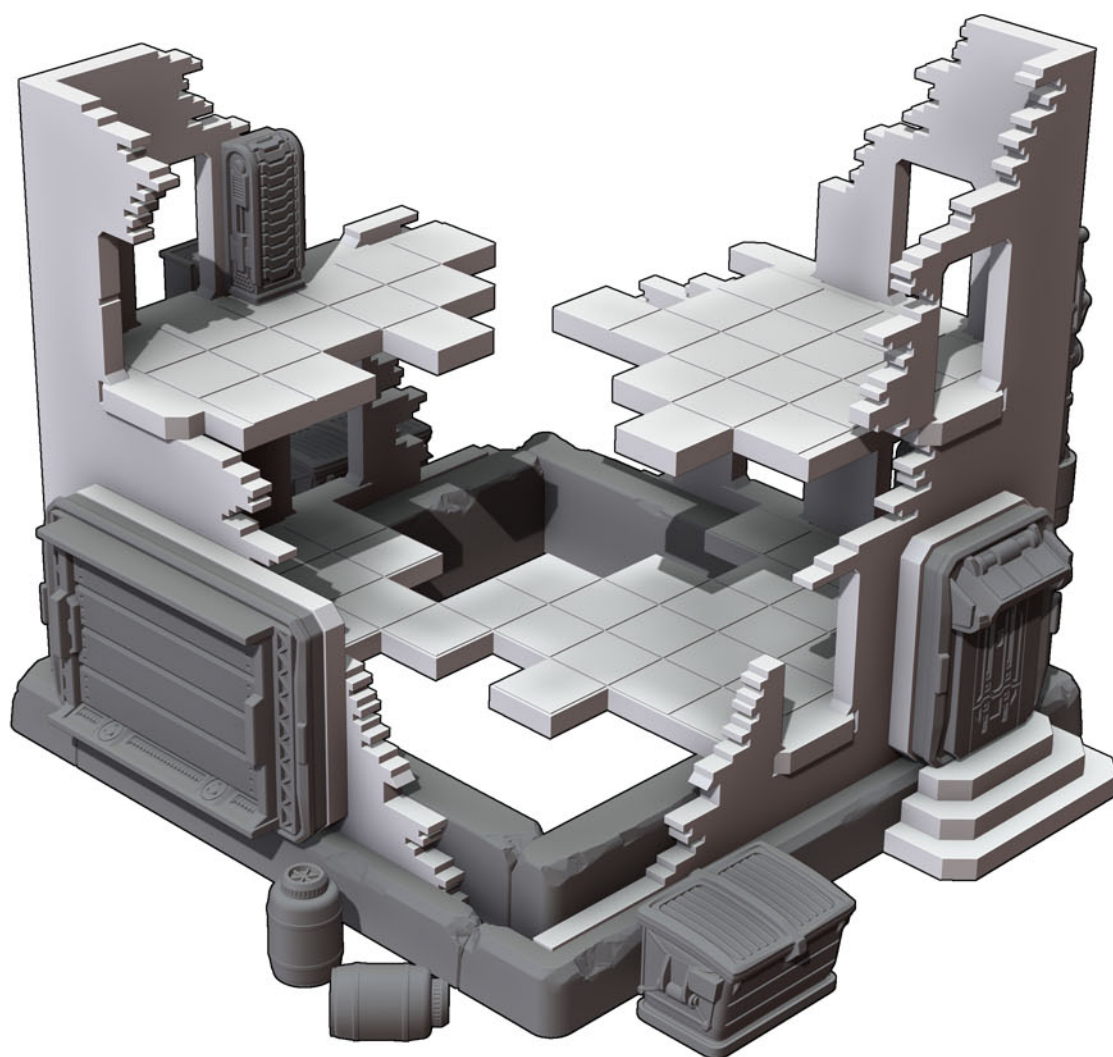
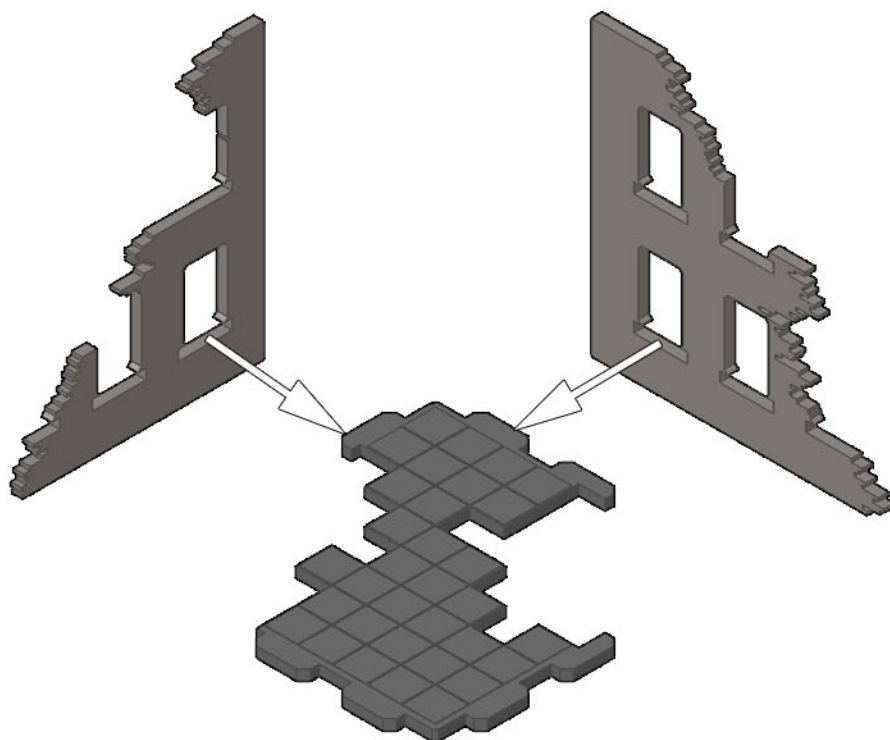


SGSS30 Ruined Residential Building Assembly Guide

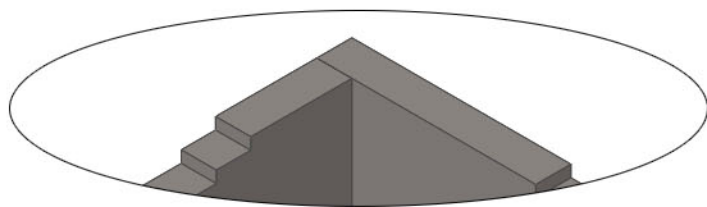


SGSS30 Ruined Residential Building Assembly Guide

Step 1

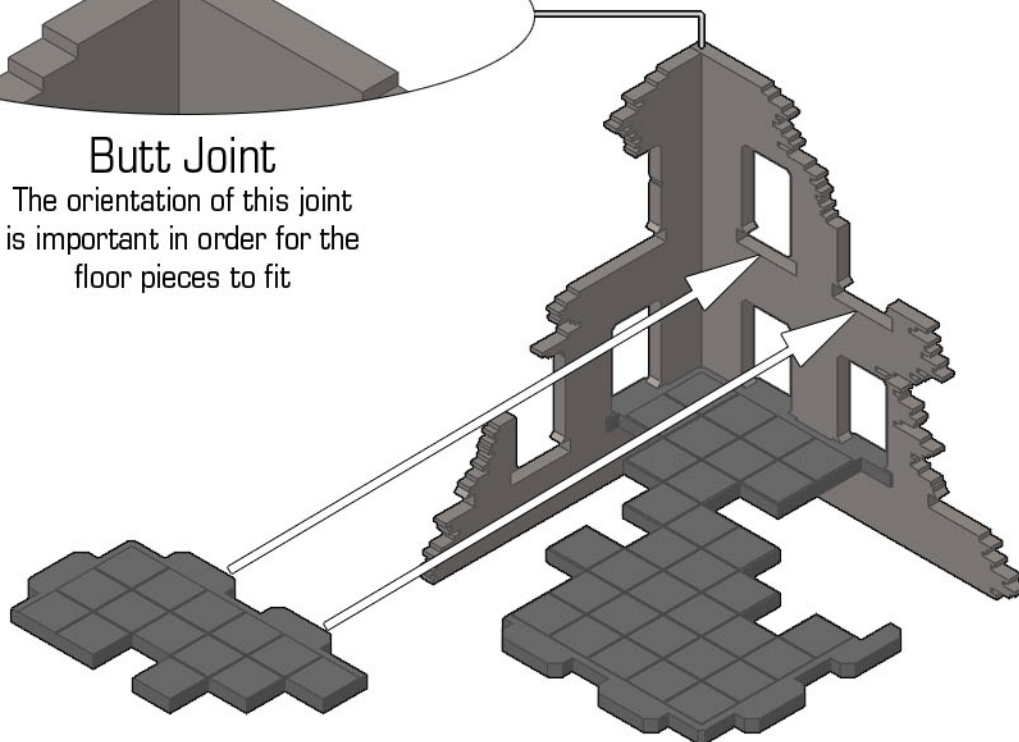


Step 2



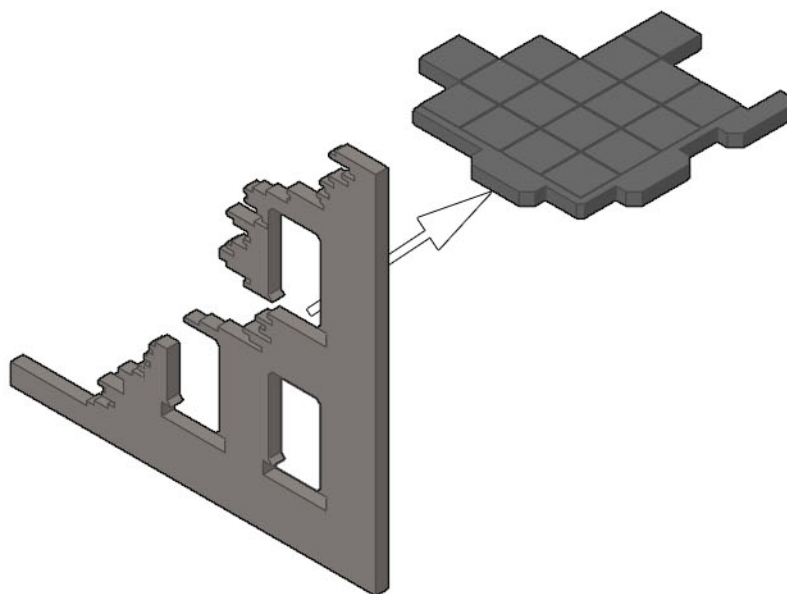
Butt Joint

The orientation of this joint is important in order for the floor pieces to fit

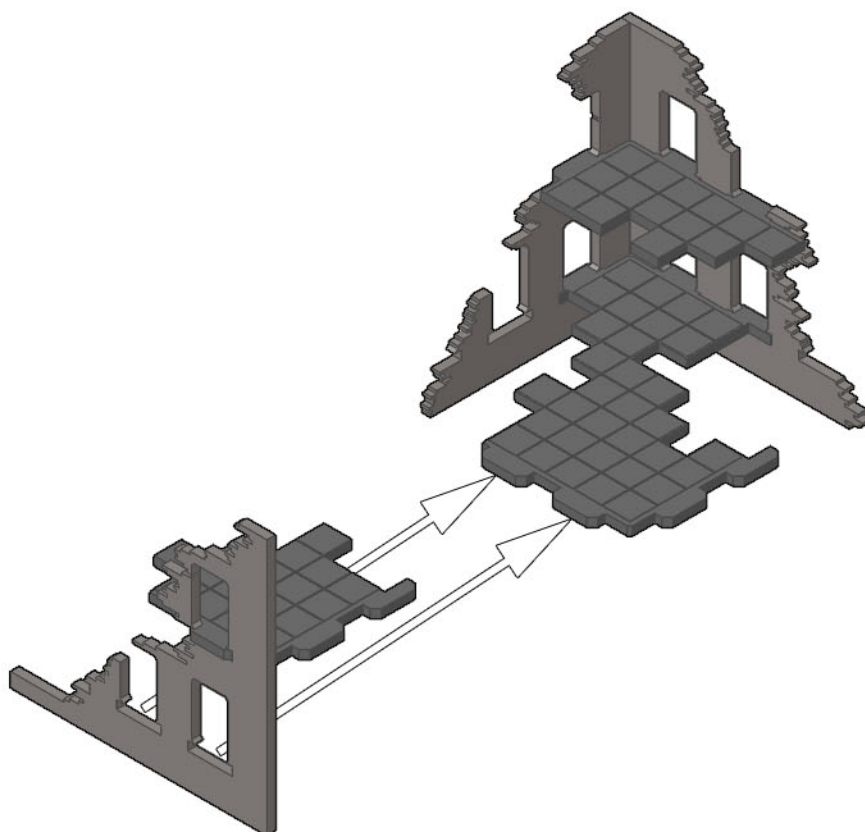


SGSS30 Ruined Residential Building Assembly Guide

Step 3

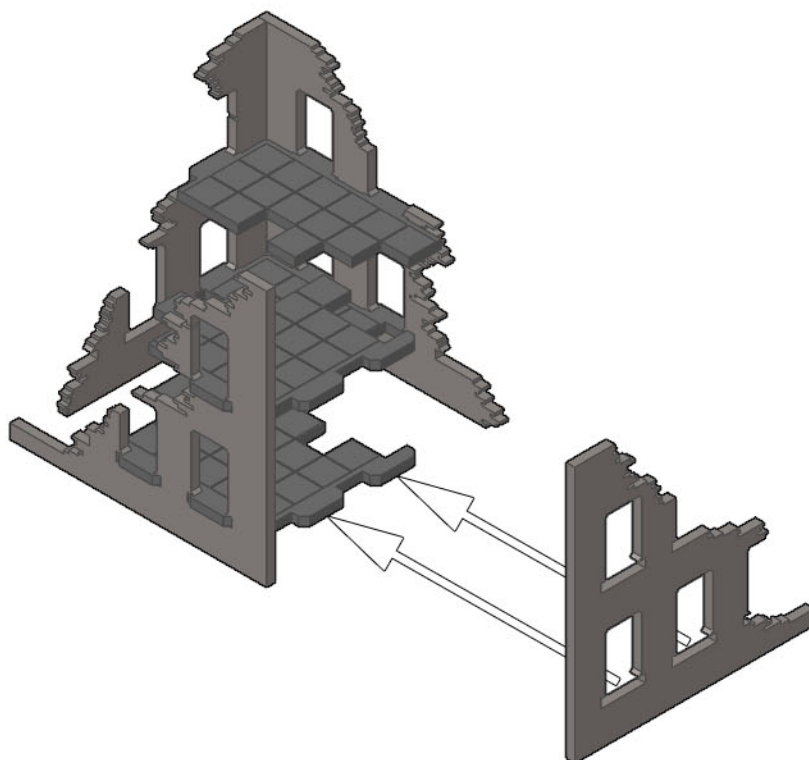


Step 4

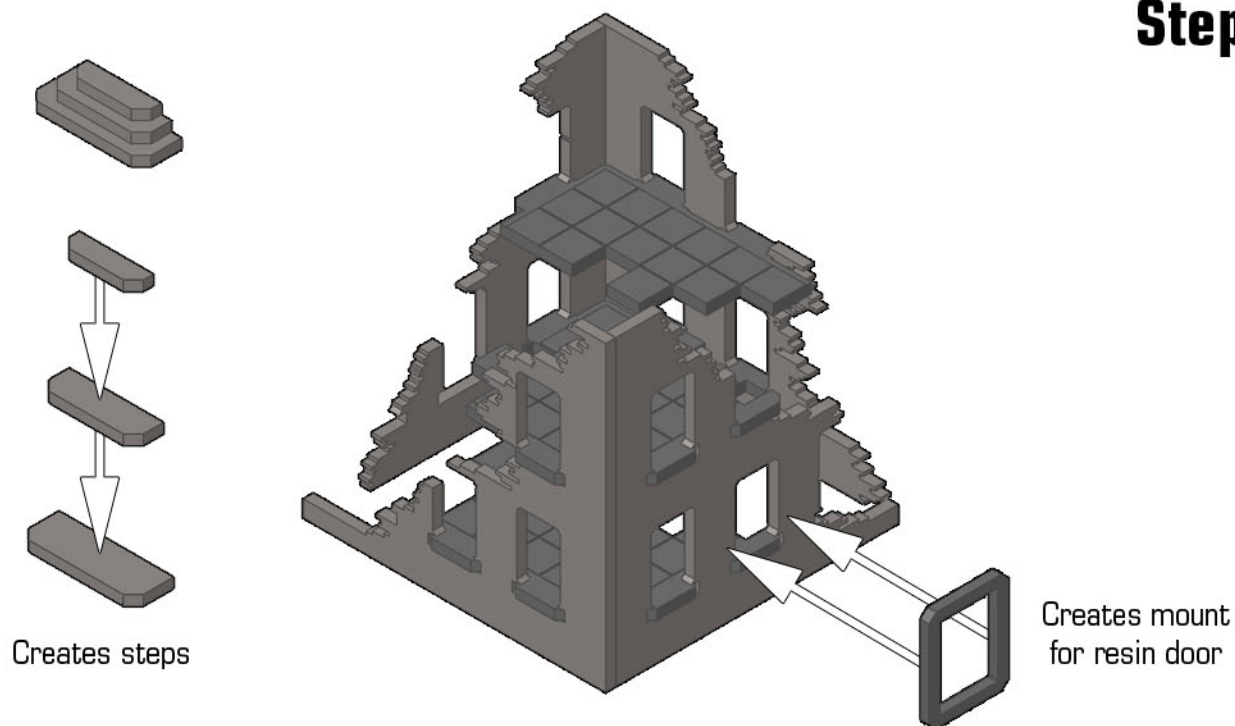


SGSS30 Ruined Residential Building Assembly Guide

Step 5



Step 6



Step 7

